

# Standard Methods: Current and Future Directions

**Andrew Eaton, Ph.D.**  
JEB-AWWA representative

**Rodger Baird**  
JEB-WEF representative

**Gene Rice**  
JEB-APHA Representative

**Steve Posavec**  
Standard Methods Mgr

NEMC  
Washington, DC  
August 8-13, 2010



**MWH**<sup>®</sup>

**BUILDING A BETTER WORLD**

# General Organization of *Standard Methods*

## ■ 3 Joint Editorial Board (JEB) Members

Set Policy and Priorities

- APHA – Gene Rice

- AWWA – Andy Eaton

- WEF – Rodger Baird

## ■ 10 Part Coordinators (PCs)

- Serve as “managers for each Part

- JTG Chairs and JTGs report through PCs to JEB

## ■ *Standard Methods* Manager

– Steve Posavec, AWWA

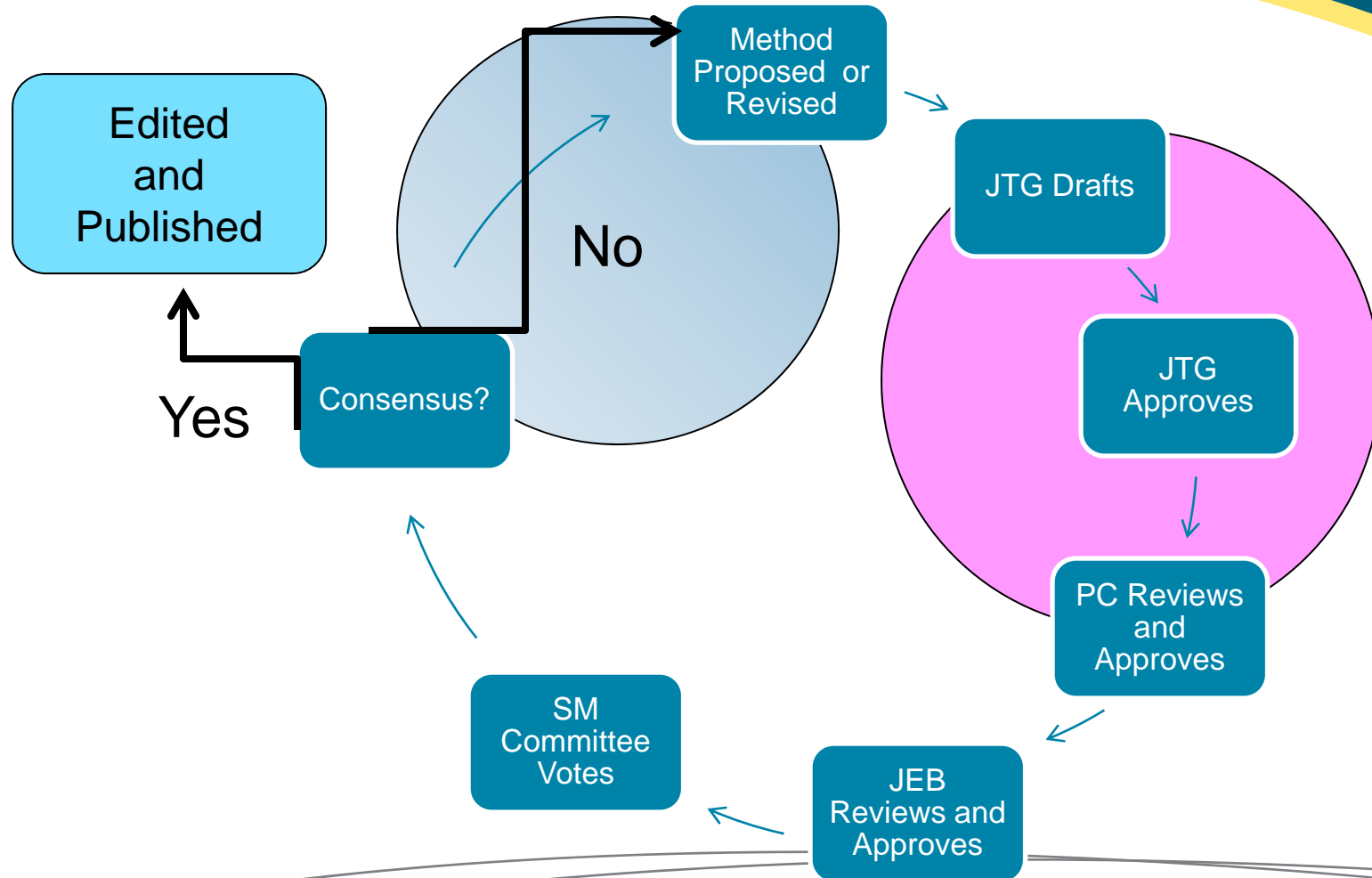
## ■ EPA Liaison – Steve Wendelken

# Credit to the Workhorses – the PCs

- 1000 – Malcolm Baker
- 2000 – Terry Baxter
- 3000 – Randy Gottler
- 4000 – Ed Askew
- 5000 – **open**
- 6000 – John Gumpfer
- 7000 – Bob Shannon
- 8000 – Don Reish
- 9000 – Margo Hunt
- 10000 – Mike Hein

And the JTG chairs and their committees – who do the real work of producing and revising methods

# Consensus Process – 6 months to several years!



# Factors Influencing Progress

- Volunteers!
- Knowledge
- Quality of Document and Format
- Validation Data
- QA/QC information
- Follow through by JTG, PC, JEB
- Timely resolution of negatives

# Why Do We Change a Method?

- Major Reasons
  - Problems identified with performance of existing method
  - Incorporate missing QC
  - Need for clarification
- Minor Reason
  - EPA request

# Why Do We Not Change Methods?

- Old EPA Approval Issues

- If a particular version is approved, and there is even a minor change in the method, EPA approval was no longer applicable.
- This is why there are some different versions of a method on the website (Standardmethods.org)

[9020 Quality Assurance/Quality Control \(1997\) \(3 methods\)](#)

[9020 Quality Assurance/Quality Control \(2005\) \(3 methods\)](#)

With the new approaches used by EPA this is no longer a barrier.

- Expedited Methods Rule (CFR 141)
- MUR and Guidance Documents (CFR 136)

# What is Needed for a New Method?

- Consensus from experts (JTG)
- QA/QC information
- **Preferably** peer reviewed literature demonstrating that the method produces valid and comparable data to existing methods for the same compound.
- **Preferably** multi lab validation
- Part 1040 describes the ideal validation data

We try to avoid commercialism– SM is not a mechanism for a company to sell their method



# Major Changes Being Implemented

- Incorporate much more QC into methods
  - Indirect approach – via 020 sections
  - 020 sections are an INTEGRAL part of each method
  - Trying to be **explicit** by adding a sentence to each method as we update it.

**“The QC steps considered an integral part of each method are summarized in Table X020:X.”**
- Temporary guidance often included in website
  - Interpretation until a method is revised

# Example of Interpretation Memos

## **Joint Editorial Board Memo on Color Measurement** -

September 28, 2009

Clarification on pH Determination for Color

## **Joint Editorial Board Letter on BOD Dilutions** - May 13, 2009

Clarifies BOD Dilution Series

# Several Ways to Respond to Inquiries

- Minor inquiries
  - PC may respond via email with clarification
  - Often it's sloppy technique or lack of understanding
  - **Almost as often** it's vague wording in method
  - Sometimes it's lack of QC
- Major inquires
  - May involve PC(s) and JEB
  - Response may result in posted memo on website

# Coming Soon to a Website Near You

- Finalizing material for 22<sup>nd</sup> Edition
  - Goal is to have any material “submitted” for balloting by Labor Day
  - Complete balloting by end of 2010
- Expect to have new 020 sections for a number of parts going to ballot shortly
  - 4020 already posted
  - 2020, 3020, 5020, 6020 at various stages pre-ballot
  - 9020 is already revised frequently
- Lots of micro methods have been revised
  - Everyone has an opinion about micro (and BOD)

# Thank You For Your Attention

Any questions?

Feel free to contact us:

Dr. Andrew Eaton

[Andrew.D.Eaton@us.mwhglobal.com](mailto:Andrew.D.Eaton@us.mwhglobal.com)

Rodger Baird

[rnbaird@earthlink.net](mailto:rnbaird@earthlink.net)

Gene Rice

[rice.gene@epa.gov](mailto:rice.gene@epa.gov)

Steve Posavec

[sposavec@awwa.org](mailto:sposavec@awwa.org)



**MWH**<sup>®</sup>

**BUILDING A BETTER WORLD**